

Farmhouse Barn Mini Album

SUPPLIES

- Farmhouse Christmas Collection Kit.....633603
- Farmhouse Christmas Sticker Sheet.....633602
- Farmhouse Christmas Chipboard Accents633605
- Farmhouse Christmas Puffy Stickers.....633611
- Farmhouse Christmas Enamel Dots633610
- Farmhouse Christmas Frames & Tags633609
- Summer Market Adhesive Brads.....619132
- White Cardstock
- Twine
- Sewing Machine or White Pen (optional)
- Adhesive
- Foam Squares

CUTTING & DIE-CUTTING LIST

Download [Barn Album SVG Files](#) for electric cutting machines or [printable PDF template](#) here.

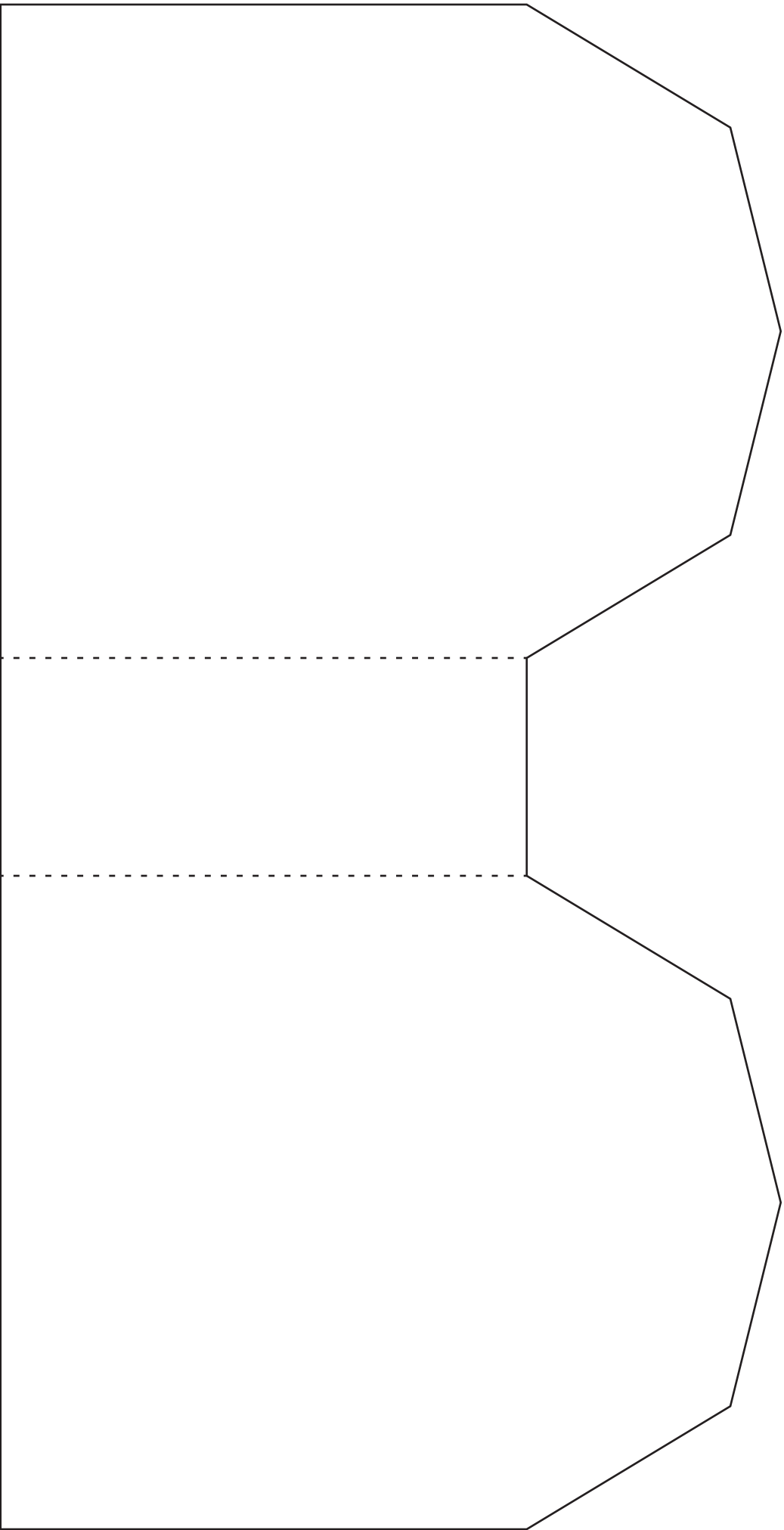
1. Cut "4X6 Journaling Cards" B side (from the collection kit) to the Farm Album outer shape. Album finish size will be 4½" x 5 3/8" x 1 ½"
2. Cut White Cardstock with the inside album pages cut files (5 total).
3. Cut the single barn nested shape for each page. (Save the 3X4 journaling sheet for the album pages & use the extra paper scraps to trim down and use!)

ASSEMBLY INSTRUCTIONS

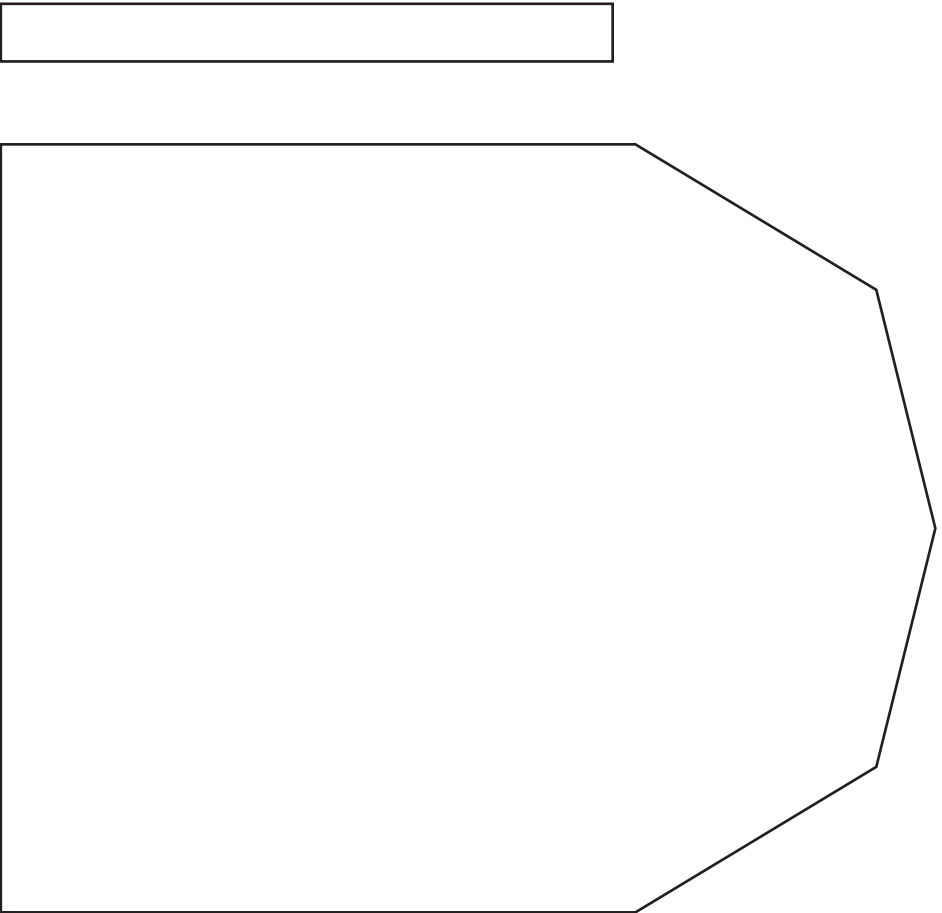
1. Die-cut the album cover and inside pages using the SVG file provided or the PDF template. Adhere together on the spine using strong adhesive. (we like to use hot glue) Optional: add machine or faux stitching around the edges of the cover pieces before gluing together.
2. Add the die-cut single barn nested shapes to each page.
3. Using the journaling cards, extra paper pieces, puffy stickers, frames & tags, stickers, brads and enamel dots, fill each page to your liking!



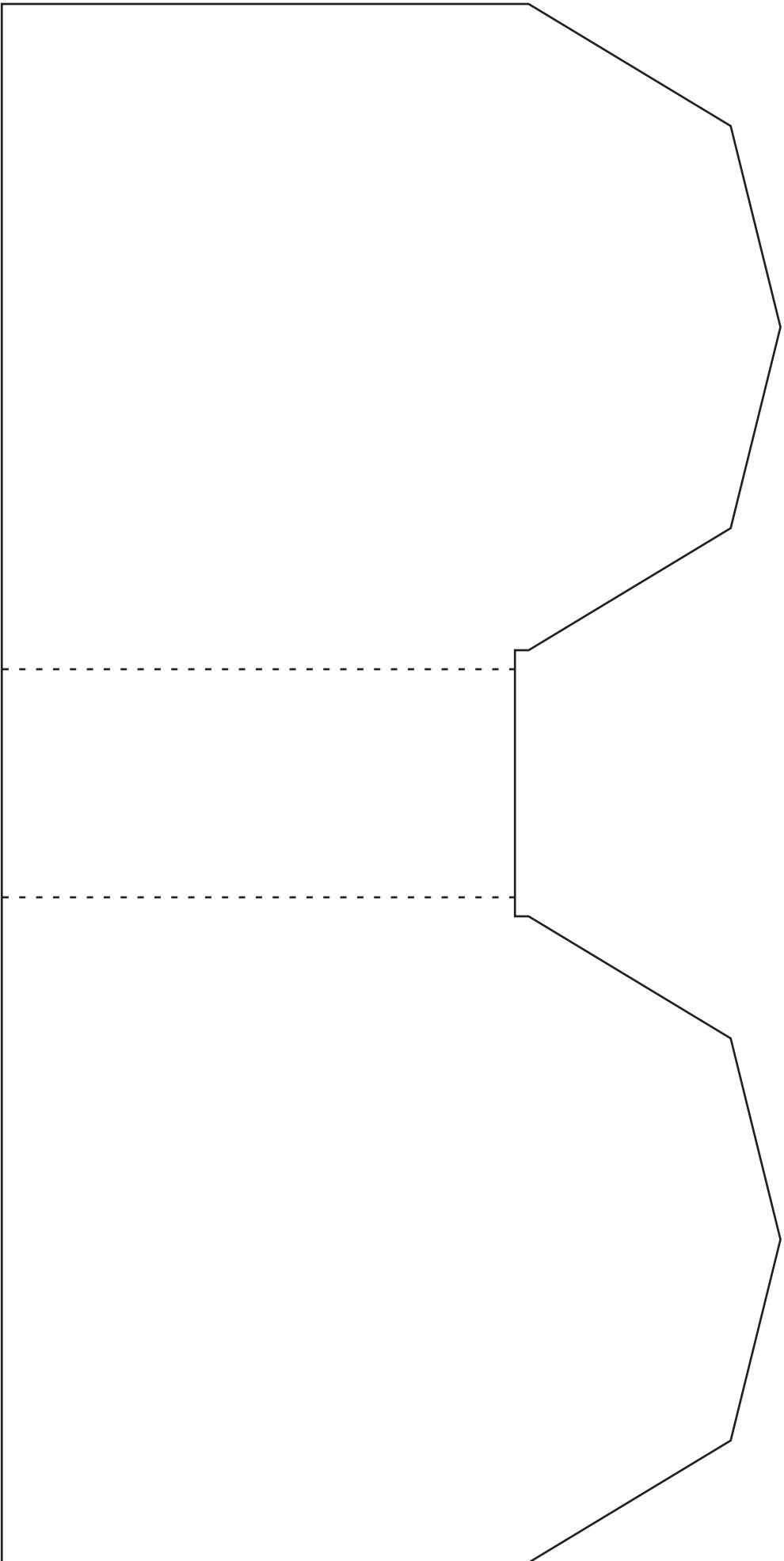




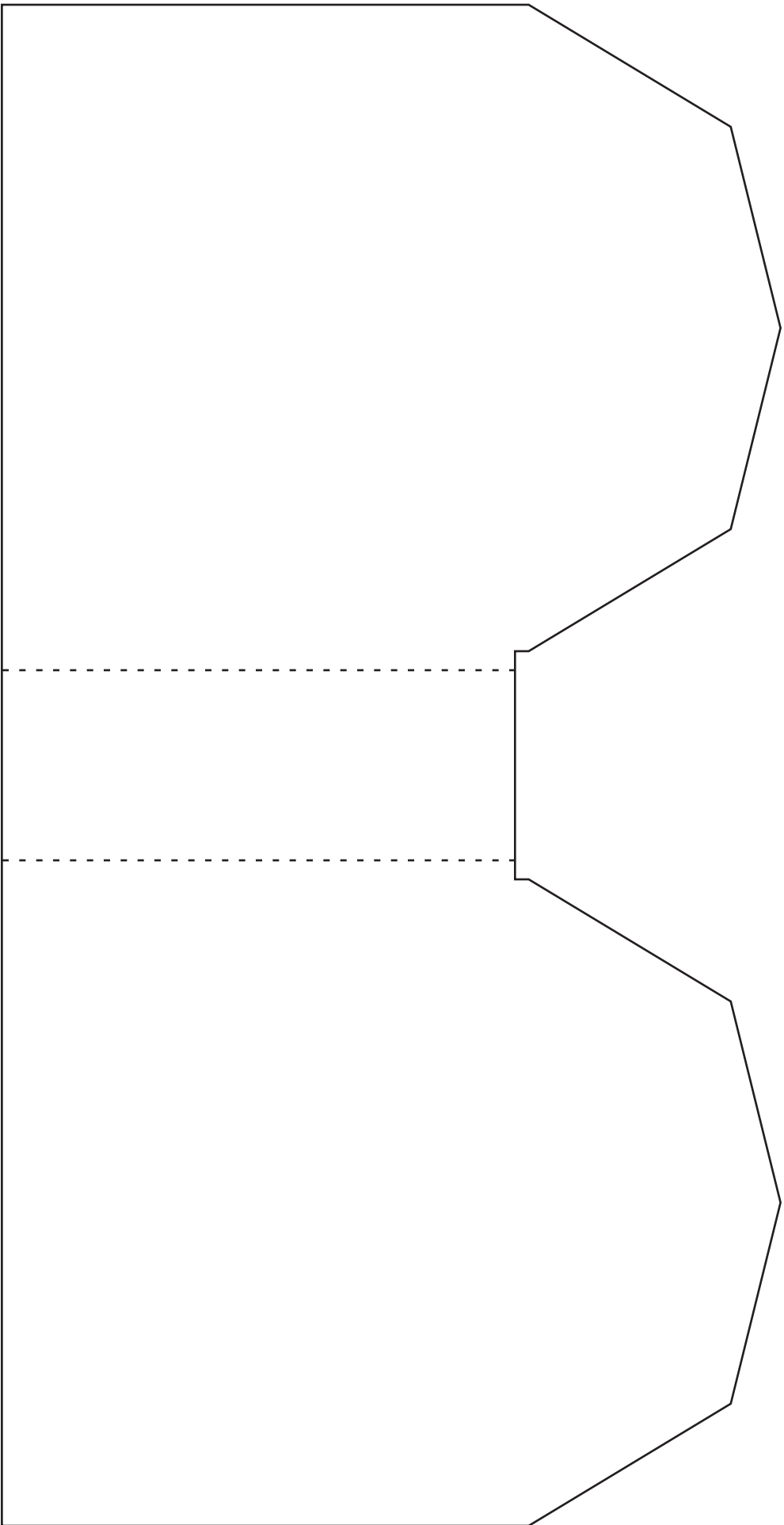
FARMHOUSE ALBUM COVER



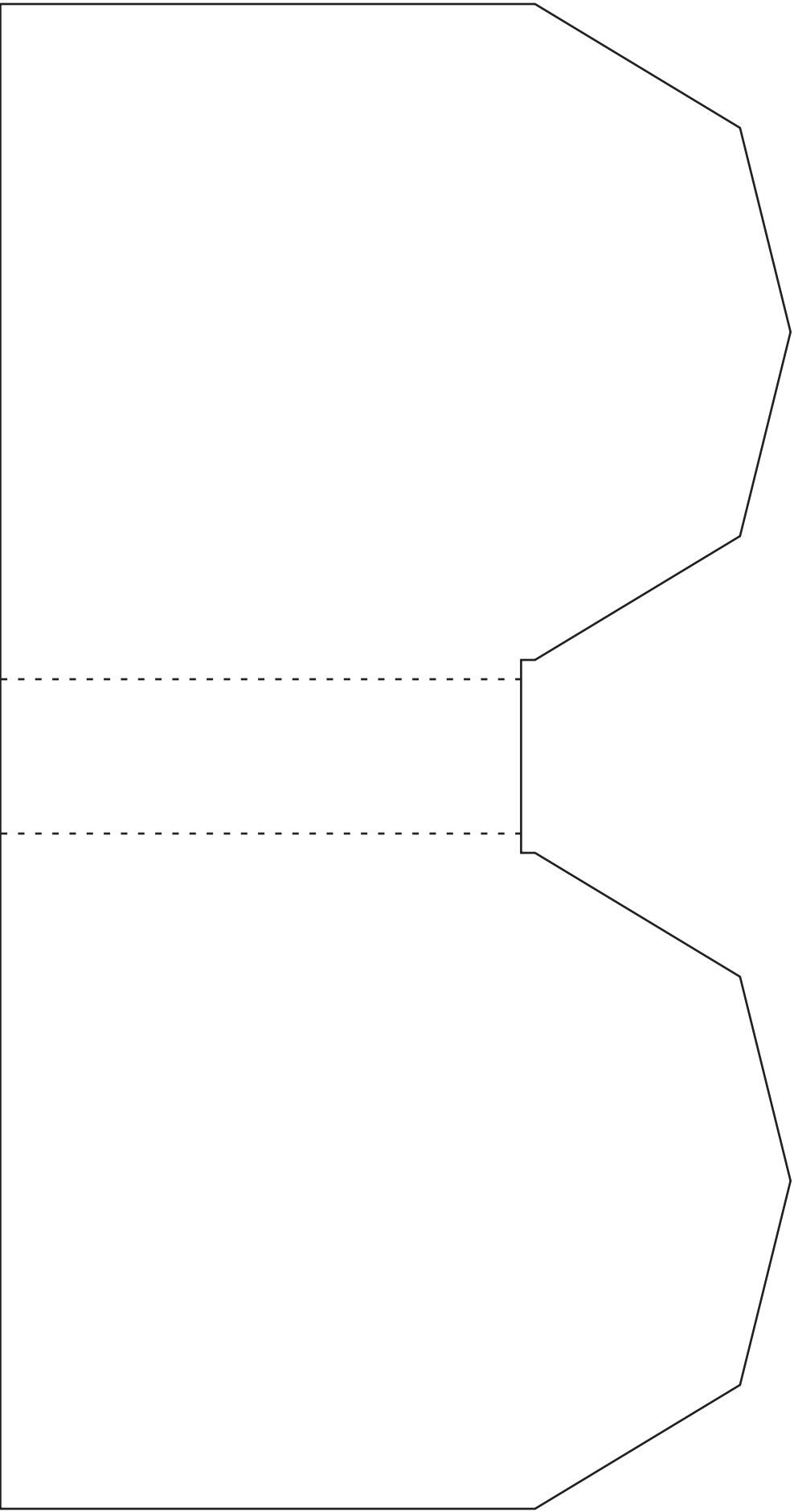
FARMHOUSE NESTED PAGE & INSIDE SPINE



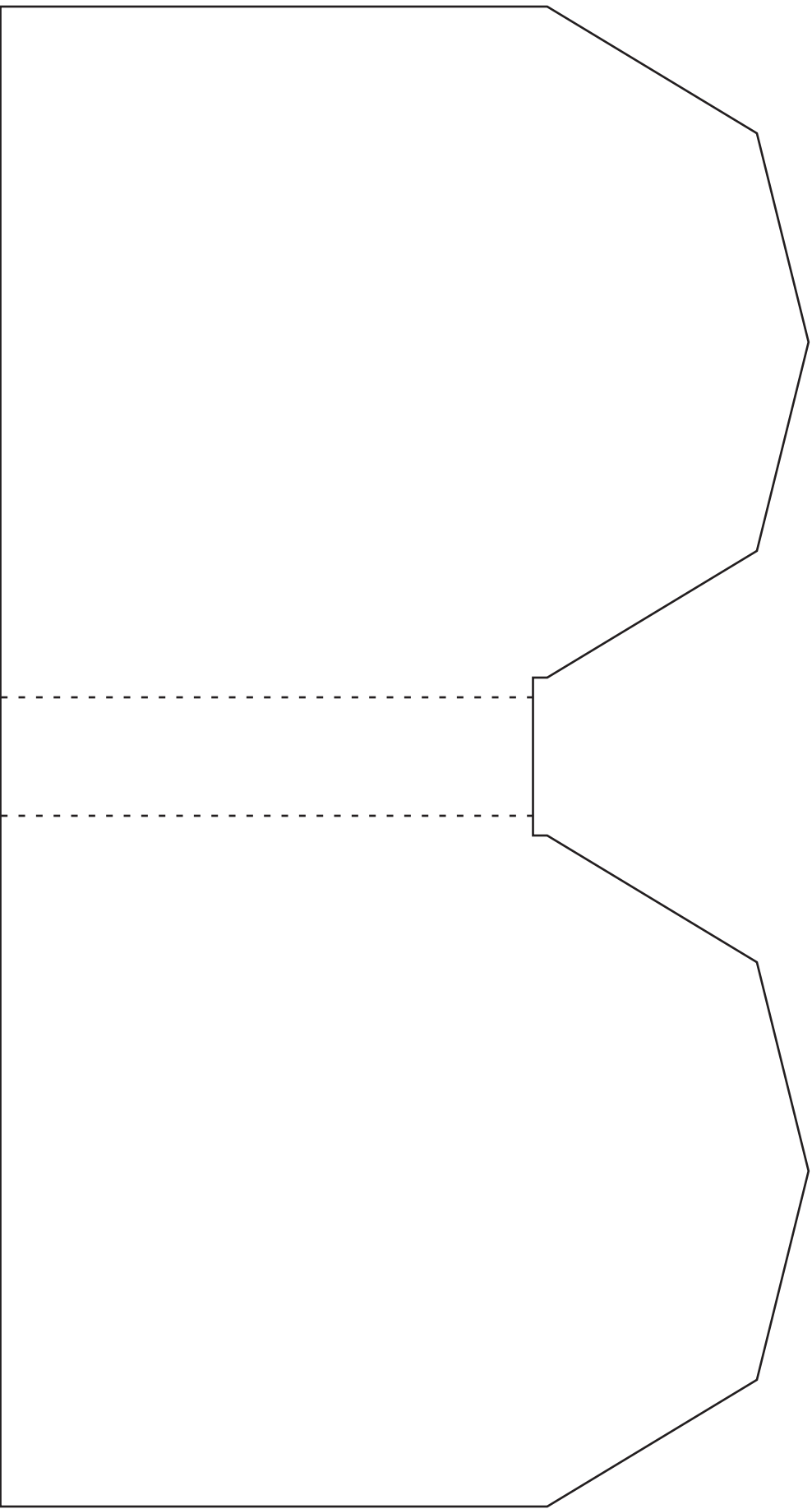
FARMHOUSE PAGE SET 1



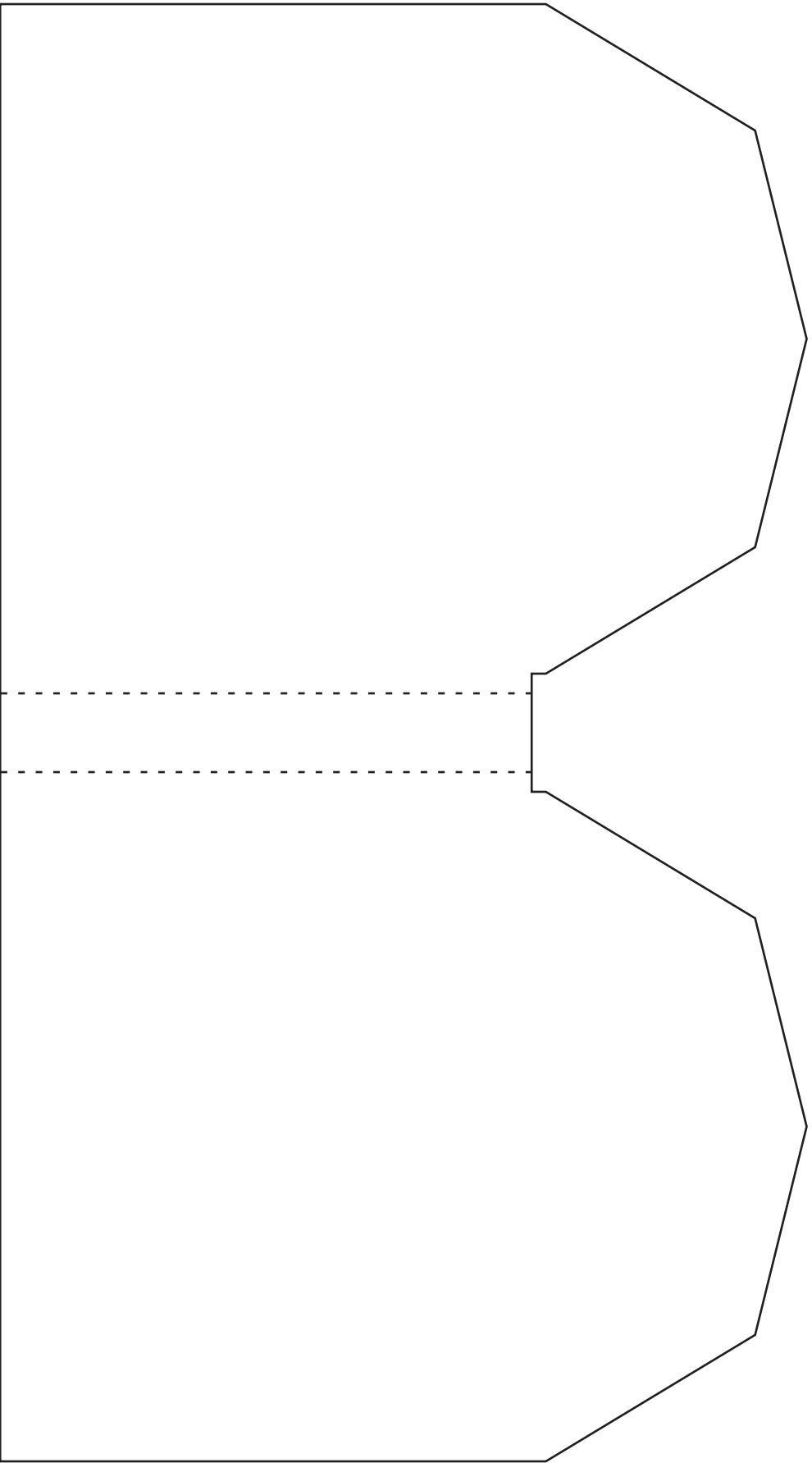
FARMHOUSE PAGE SET 2



FARMHOUSE PAGE SET 3



FARMHOUSE PAGE SET 4



FARMHOUSE PAGE SET 5